



Jenner Headlands Preserve Public Recreation

Fact Sheet: October 2017



Overview

The primary goal of acquiring the Preserve was to protect and enhance the natural and cultural resources of the property and to prevent the land from being parcelized, fragmented, and converted to rural residential development. A subsequent and important goal was to incorporate appropriate recreational use compatible with natural and cultural resource protection. Since acquisition, The Wildlands Conservancy and the Sonoma Land Trust have hosted between 500-700 people on the property each year through our guided hikes program and stewardship workdays. Our ongoing hike program consists of staff-led hikes conducted by a variety of organizations, including The Wildlands Conservancy, the Sonoma Land Trust, LandPaths, CoastWalk, Stewards of the Coast and Redwoods, the California Native Plant Society, the Sierra Club, as well as various local hiking clubs. Our hiking program has allowed visitors to experience the Preserve while providing us time to undertake a comprehensive natural, cultural, and recreational planning process that culminated in our "Jenner Headlands Integrated Resource Management Plan," the guiding document for the management of the Preserve, which is available on our website to download and read to learn more about the Preserve (see link below).

Gateway to the Headlands

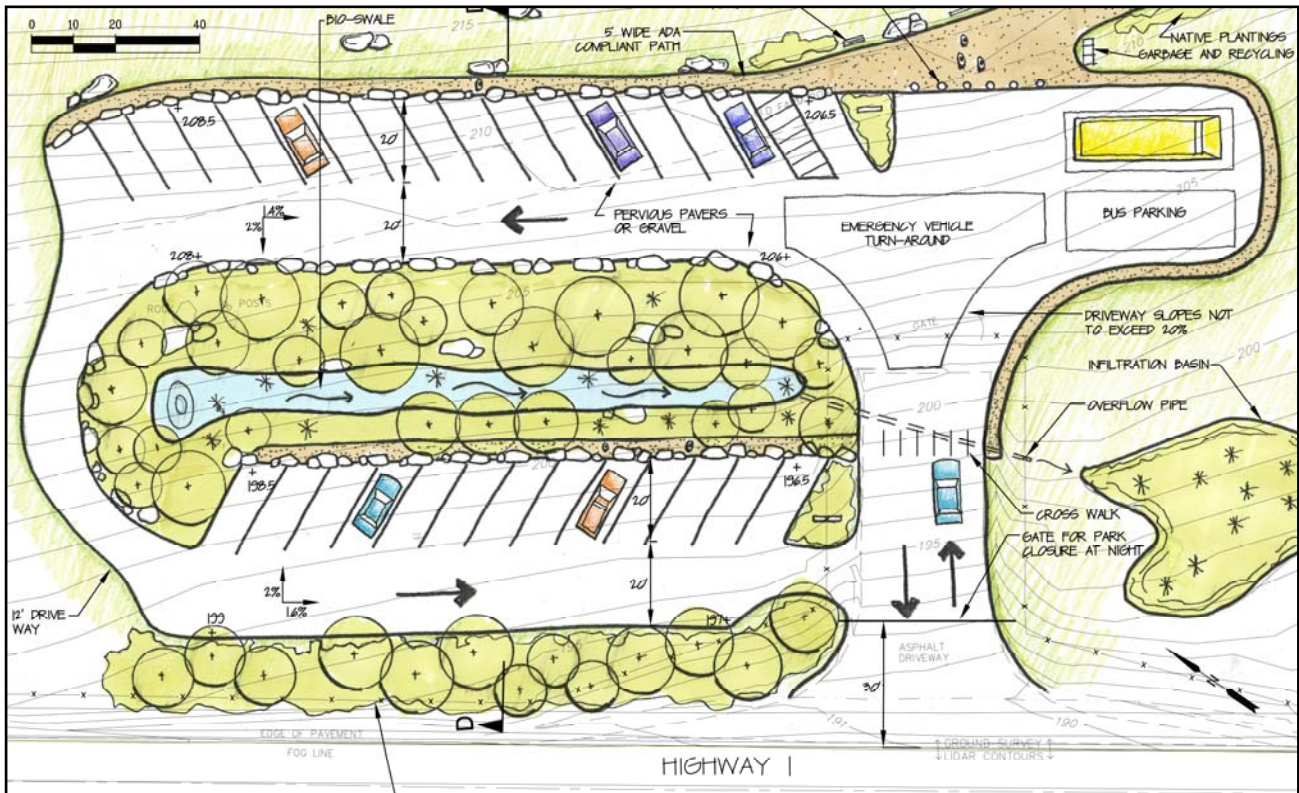
As much as folks love coming out on our staff-led hikes and learning about the Preserve from one of our knowledgeable Rangers, they often ask, "So when can I come out and I hike on my own?" Well, we have been working on that "puzzle-piece" ever since the Preserve was purchased and protected as open space. The Preserve is large, over 5,600 acres, but there are actually very few locations where it reaches a public road and provides safe access for visitors. After consulting with local community members, user groups, and local park groups and agencies, the most suitable and safest spot to access the property is along State Highway 1. Because of its high visibility, we have carefully thought through the design of the parking lot, making it as aesthetically pleasing as possible, blending it into the natural topography.

The parking lot will be two-tiered, matching the existing hill slope, with cars parked away from sight-seers traveling along the highway (see design on back page). Separating the two tiers will be a large seasonal wetland or bio-swale that will collect rainfall runoff. An ADA-trail will start at the parking lot and travel along the old railroad grade that was originally created back in the early 1900s as a way to haul redwood timber out to schooners waiting in the nearby rugged and rocky coves. Along the trail, a restroom will be tucked away into an old rock quarry. Close by will be an overlook area with picnic tables and kiosks providing visitors with information on the natural and cultural history of the Preserve. From this trailhead folks will be able to travel up into the Preserve and experience and explore its incredible scenic beauty.

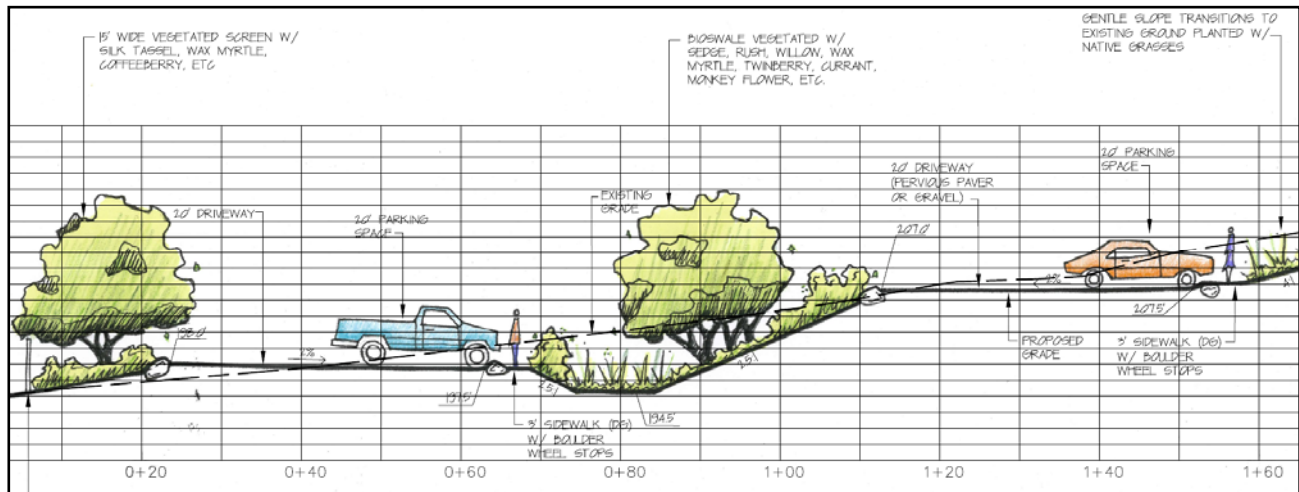
Trails, Visitor's Center, and More

The parking lot will open in the spring of 2018 and be free of charge. There will be 12 miles of trails that will lead visitors through a variety of habitats, including: coastal grasslands with spectacular views of the Sonoma Coast, rugged redwood forests, lush-green forested gulches, and oak woodlands along the inland ridges. There will also be a route up to the Sonoma Land Trust's spectacular Pole Mountain Preserve at 2,204 feet in elevation – the highest point along the Sonoma Coast. From there, on a clear day, visitors will have views of Mt. Tamalpais, Mt. St. Helena, and Mt. Diablo -- that's 80 miles of spectacular views!

Along the trails and scenic overlooks will be benches, picnic tables, and information on the natural history of the Preserve for visitors to enjoy. In the coming years we hope to renovate the old ranch barn, which dates back to the early 1900s, into a visitor's center, complete with information about the natural and cultural history of the Preserve. We are looking forward to the day we can welcome everyone to come up and experience this incredible part of the Sonoma Coast on their own and free of charge.



Jenner Headlands Preserve Highway 1 Parking Lot Design: Aerial View



Jenner Headlands Preserve Highway 1 Parking Lot Design: Profile View